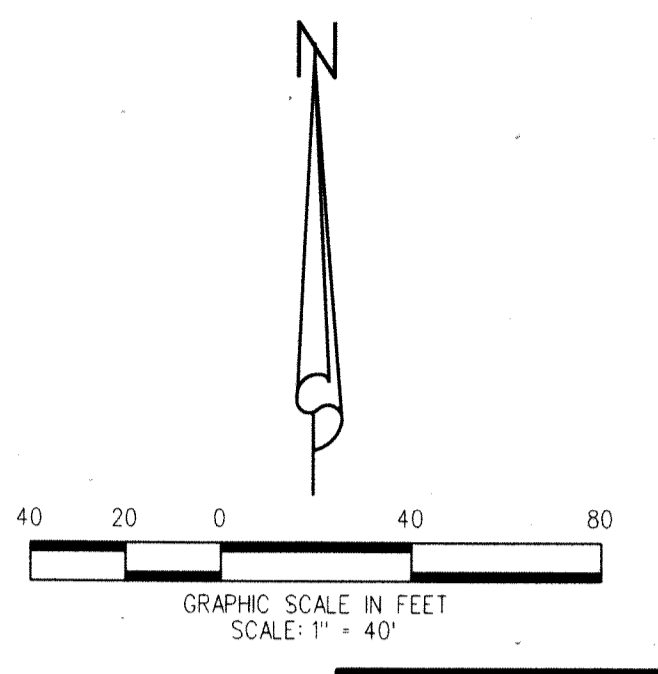


ABACOA - REPLAT OF PARCEL B OF TRACT WK4A

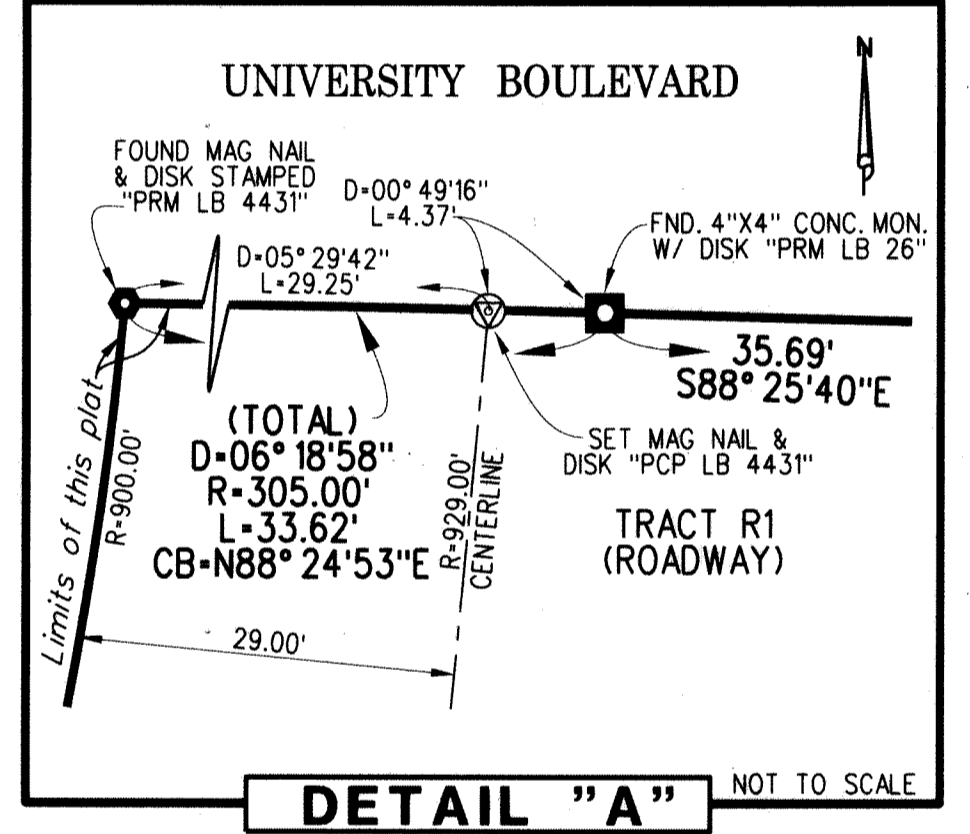
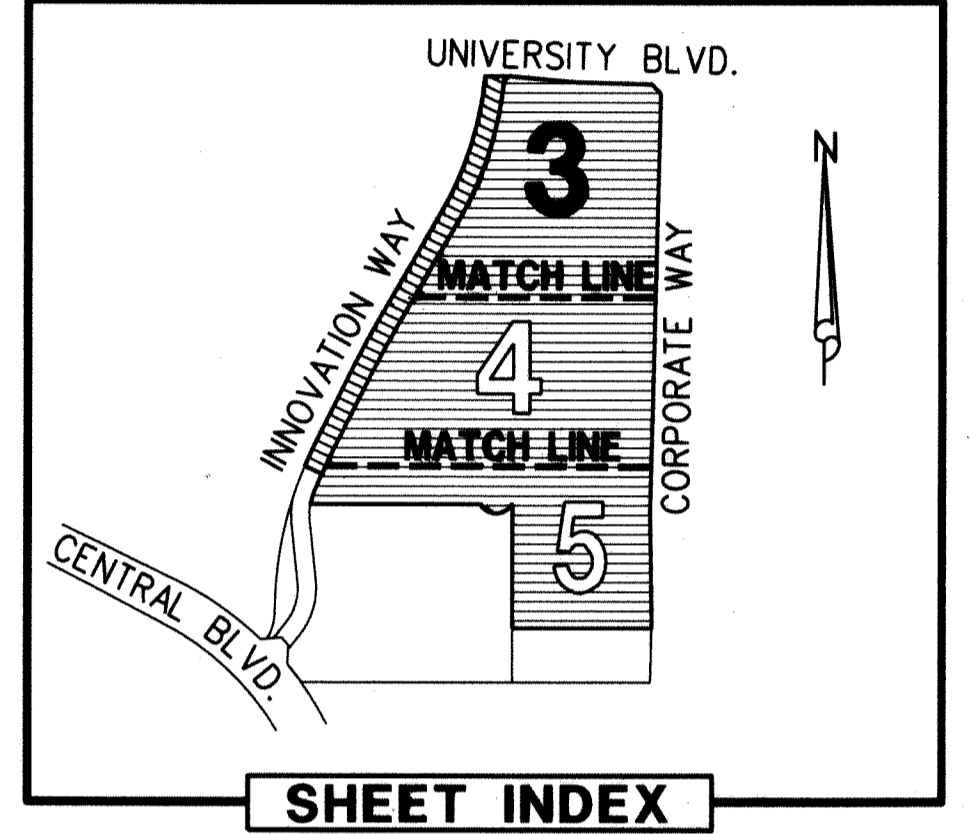
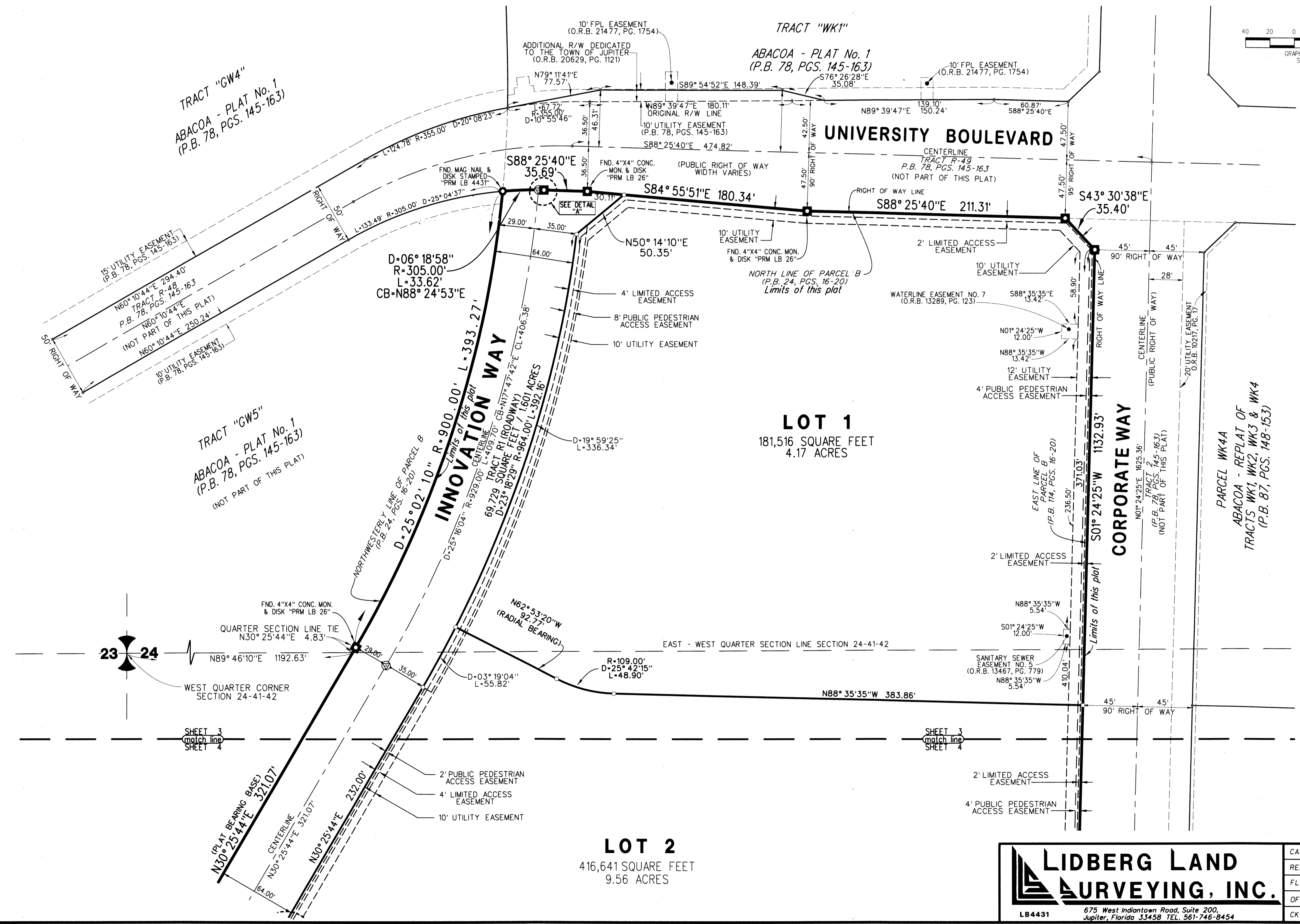
143

BEING A REPLAT OF PARCEL B, AS SHOWN ON ABACOA - REPLAT OF TRACT WK4A,
 RECORDED IN PLAT BOOK 114, PAGES 16 THROUGH 20,
 PUBLIC RECORDS OF PALM BEACH COUNTY, FLORIDA,
 LYING IN SECTION 24, TOWNSHIP 41 SOUTH, RANGE 42 EAST,
 TOWN OF JUPITER, PALM BEACH COUNTY, FLORIDA

SEPTEMBER 2021



SHEET 3 OF 5



ABBREVIATIONS:

- D = CURVE'S DELTA ANGLE
- R = CURVE'S RADIUS
- L = CURVE'S ARC LENGTH
- CB = CURVE'S CHORD BEARING
- CL = CURVE'S CHORD LENGTH
- CONC. = CONCRETE
- FPL = FLORIDA POWER & LIGHT CO.
- L.A.E. = LIMITED ACCESS EASEMENT
- MON = MONUMENT
- O.R.B. = OFFICIAL RECORD BOOK
- P.B. = PLAT BOOK
- PCP = PERMANENT CONTROL POINT
- PG. = PAGE
- POS. = PERMANENT REFERENCE MONUMENT
- PRM = PERMANENT REFERENCE MONUMENT
- W/ = WITH

LEGEND:

- = DENOTES FOUND "PRM" FOUND 4"x4" CONC. MON. W/ DISK STAMPED "PRM LB 4431" UNLESS OTHERWISE NOTED
- = DENOTES FOUND "PRM" FOUND 5/8" IRON ROD W/ METAL CAP STAMPED "PRM LB 4431"
- ⊙ = DENOTES SET "PRM" SET 5/8" IRON ROD W/ METAL CAP STAMPED "PRM LB 4431"
- ⊙ = DENOTES FOUND "PRM" FOUND MAG NAIL & DISK STAMPED "PRM LB 4431"
- ⊙ = DENOTES SET "PRM" SET MAG NAIL & DISK STAMPED "PRM LB 4431"
- ⊙ = DENOTES FOUND "PCP" FOUND MAG NAIL W/ DISK STAMPED "PCP LB 4431"
- ⊙ = DENOTES SET "PCP" SET MAG NAIL W/ DISK STAMPED "PCP LB 4431"

LIDBERG LAND SURVEYING, INC.
 675 West Indiantown Road, Suite 200,
 Jupiter, Florida 33458 TEL. 561-746-8454

CAD: K:\UST\244142\114-16\05-053G-306A\05-053G-306A.DGN		
REF.	FB. PG.	JOB 05-053G-306A
FLD.		DATE SEPTEMBER 2021
OFF. CASASUS		DWG. D05-053PPP
CKD. D.C.L.	SHEET 3 OF 5	